

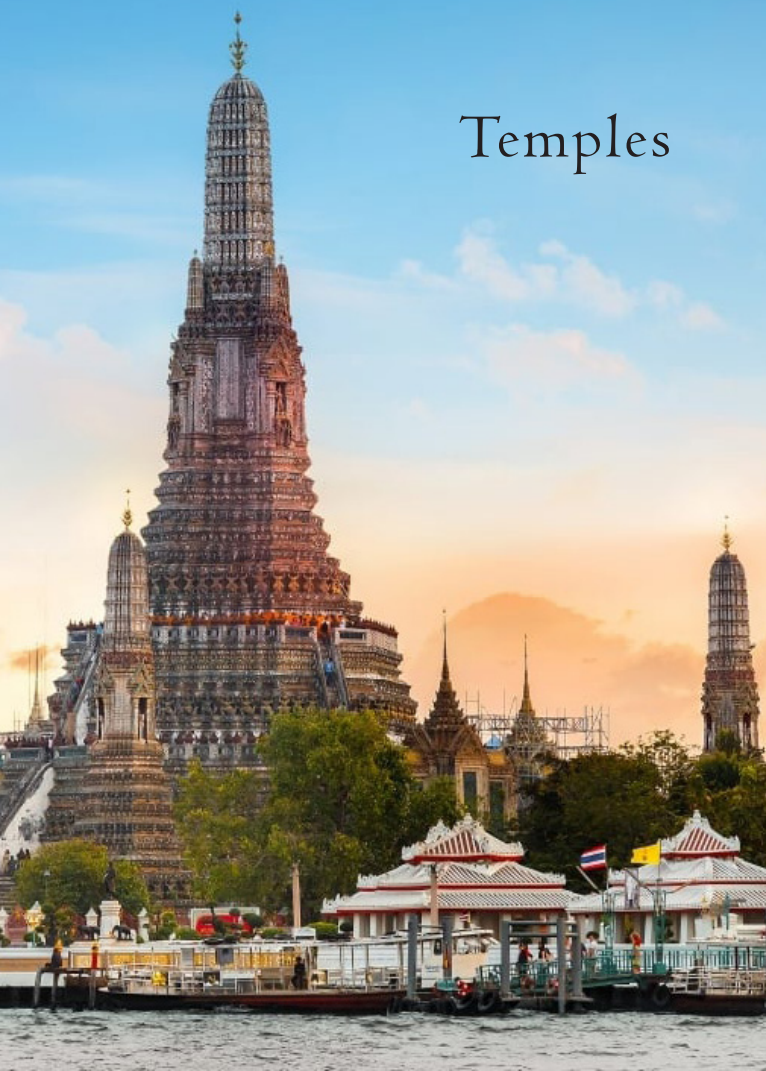


EASTIN
GRAND HOTEL
PHAYATHAI

Tourist Attraction List



Temples



The Grand Palace/ The Temple of the Emerald Buddha

- 🕒 08:30 - 15:30 hrs.
- 🚇 MRT - Sanam Chai (Exit 1)
- 🚗 30 mins.
- 🚢 Tian Pier(N8), Chang Pier(N9)
- 📱 ✓



Wat Pho

- 🕒 08:00 - 18:00 hrs.
- 🚇 MRT - Sanam Chai (Exit 1)
- 🚗 30 mins.
- 🚢 Tian Pier(N8)



Wat Arun

- 🕒 08:00 - 17:30 hrs.
- 🚇 MRT - Sanam Chai (Exit 1)
- 🚗 30 mins.
- 🚢 Tian Pier(N8)



Wat Traimit (The Golden Buddha)

- 🕒 08:00 - 17:00 hrs.
- 🚇 MRT - Hua Lamphong (Exit 1)
- 🚗 30 mins.



Wat Ben (Marble Temple)

- 🕒 06:00 - 18:00 hrs.
- 🚗 15 mins.



Wat Yannawa

- 🕒 09:00 - 17:00 hrs.
- 🚇 BTS - Saphan Taksin (Exit 4)
- 🚗 20 mins.



Wat Saket (The Golden Mount)

- 🕒 07:00 - 19:00 hrs.
- 🚗 25 mins.



Wat Paknam Phasi Charoen

- 🕒 08:00 - 18:00 hrs.
- 🚇 BTS - Talat Phlu (Exit 3)
- MRT - Bang Phai (Exit 1)
- 🚗 30 mins.



Bangkok Drugstore - Petchaburi Soi 5

- 🕒 07:00 - 23:00 hrs.
- 🚶 15 mins.



Boots - Century The Movie Plaza

- 🕒 10:00 - 21:30 hrs.
- 🚇 BTS - Victory Monument (Exit 2)
- 🚗 10 mins.



Pharmacies/ Chemists



Floating Markets



Amphawa

🕒 Friday - Sunday
16:00 - 22:30 hrs.
🚗 90-120 mins.



Damnoen Saduak

🕒 07:00 - 15:00 hrs.
🚗 90-120 mins.



Shuttle buses to Bangkok floating market

🕒 Saturday - Sunday
09:00 - 16:45 hrs.
🚗 MRT - Bang Khun Non (Exit 2)
30 mins.
🚗 FREE Shuttle buses



Song Khlong (at Wat Taling Chan)

🕒 Saturday - Sunday
08:00 - 15:00 hrs.
🚗 25 mins.



Khlong Lat Mayom

🕒 Saturday - Sunday and
Holidays 08:00 - 17:00 hrs.
🚗 30 mins.



Taling Chan

🕒 Saturday - Sunday
07:30 - 18:00 hrs.
🚗 30 mins.



Wat Saphan

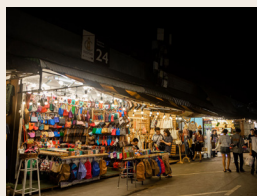
🕒 Saturday - Sunday
08:00 - 15:30 hrs.
🚗 30 mins.

Markets/ Street Food Destinations



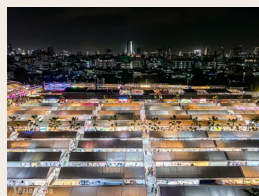
Jodd Fair - Rama IX - Dan Neramit

🕒 16:00 - 24:00 hrs.
🚗 BTS - Phahon Yothin 24
(Exit 2) พระราม 9
MRT - Phra Ram 9
(Exit 2) แดนเนรมิต
🚗 10 mins.



Chatuchak Weekend Market

🕒 Friday - Sunday
05:00 - 24:00 hrs.
🚗 BTS - Mo Chit Station
(Exit 1)



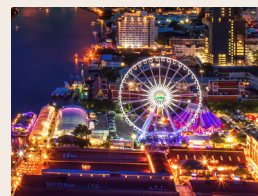
The One Ratchada

🕒 17:00 - 24:00 hrs.
🚗 MRT - Thailand
Cultural Centre (Exit 3)
🚗 15 mins.



Chinatown/ Song Wat Road

🕒 18:00-24:00 hrs.
🚗 MRT - Wat Mangkorn
(Exit 1)
🚗 20 mins.



Asiatique

🕒 17:00 - 14:00 hrs.
🚗 BTS - Saphan Taksin
(Exit 2)
🚗 30-45 mins.



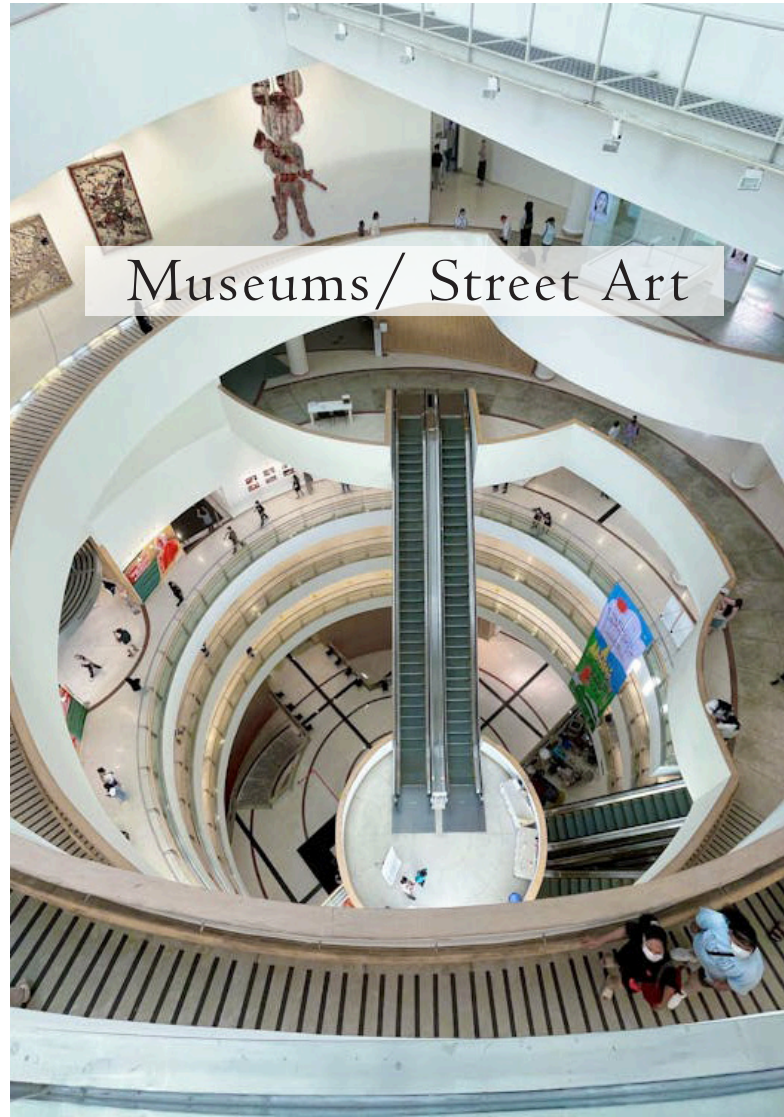
Phaya Thai Palace

- 09:30 - 15:30 hrs.
(closed on Monday, Wednesday and Friday)
- BTS - Victory Monument (Exit 3)
- 10 mins.



Bangkok Art & Culture Centre

- Tuesday - Sunday
10:00 - 20:00 hrs.
- BTS - National Stadium (Exit 3)
- 10 mins.



Madame Tussauds Bangkok

- 10:00 - 19:00 hrs.
- BTS - Siam (Exit 1)
- 10 mins.



SEA LIFE Bangkok Ocean World - Siam Paragon

- 10:00 - 20:00 hrs.
- BTS - Siam (Exit 5)
- 15 mins.



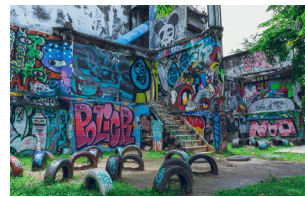
Jim Thompson House Museum

- 10:00 - 19:00 hrs.
- BTS - National Stadium (Exit 1)
- 10 mins.



Suan Pakkad Palace

- 09:00 - 16:00 hrs.
- BTS - Phaya Thai (Exit 4)
- 10 mins.
- 15 mins.



Chaloemla Park (Graffiti Park)

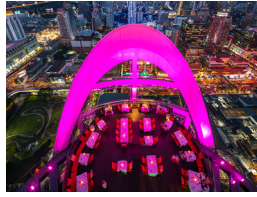
- 24 hrs.
- BTS - Ratchathewi (Exit 2)
- 10 mins.
- 15 mins.

Bars/ Nightlife



Vertigo and Moon Bar - Banyan Tree Hotel

🕒 17:00 - 01:00 hrs.
 🚇 MRT - Lumphini (Exit 2)
 🚗 25-30 mins.



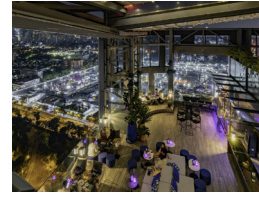
Red Sky - Central World

🕒 17:00 - 01:00 hrs.
 🚇 BTS - Siam (Exit 5, 6) or BTS - Chit Lom (Exit 6)
 🚗 15 mins.



Sky Bar - Lebua State Tower

🕒 17:00 - 24:00 hrs.
 🚇 BTS - Saphan Taksin (Exit 2)
 🚗 25-30 mins.



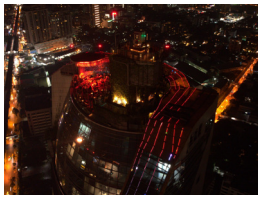
HI-SO - Sofitel SO

🕒 17:00 - 24:00 hrs.
 🚇 MRT - Lumphini (Exit 2)
 🚗 25-30 mins.



Three Sixty Lounge - Millennium Hilton

🕒 17:00 - 01:00 hrs.
 🚇 BTS - Charoen Nakhon (Exit 2)
 🚗 30-45 mins.



Tichuca Rooftop Bar

🕒 17:00 - 24:00 hrs.
 🚇 BTS - Thong Lo (Exit 4)
 🚗 30-45 mins.



Above Eleven

🕒 18:00 - 02:00 hrs.
 🚇 BTS - Nana (Exit 3)
 🚗 15 mins.



Octave Rooftop Lounge & Bar - Bangkok Marriott Hotel Sukhumvit

🕒 17:00 - 02:00 hrs.
 🚇 BTS - Thong Lo (Exit 1)
 🚗 30-45 mins.



Eagle Nest Bar

🕒 17:00 - 01:00 hrs.
 🚇 MRT - Sanam Chai (Exit 1)
 🚗 30 mins.

Restaurants



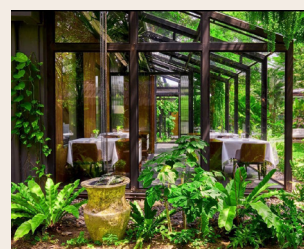
Baan Tepa

🕒 Wednesday - Sunday
 18:00 - 23:00 hrs.
 🚇 MRT - Yaek Lam Sali
 🚗 45-60 mins.
 🌸 2-stars
 🍴 Thai Contemporary



Mezzaluna - Lebua State Tower

🕒 Monday - Saturday
 18:00 - 24:00 hrs.
 🚇 BTS - Saphan Taksin (Exit 2)
 🚗 25-30 mins.
 🌸 2-stars
 🍴 French Contemporary



Sühring

🕒 Wednesday
 17:30 - 20:30 hrs.
 Thursday - Sunday
 12:00 - 13:30 hrs. /
 17:30 - 20:30 hrs.
 🚗 30-45 mins.
 🌸 2-stars
 🍴 European Contemporary



Jay Fai

- 🕒 Wednesday - Saturday
09:00 - 19:30 hrs.
- 🚇 MRT - Sam Yot
- 🚗 30 mins.
- 🌸 1-stars
- 🍴 Thai



Potong

- 🕒 Thursday - Monday
16:30 - 23:00 hrs.
- 🚇 MRT - Wat Mangkorn (Exit 1)
- 🚗 30-40 mins.
- 🌸 1-stars
- 🍴 Thai Progressive



Signature - VIE Hotel Bangkok

- 🕒 Tuesday - Sunday
18:00 - 22:00 hrs.
- 🚇 BTS - Ratchathewi (Exit 2)
- 🚗 10 mins.
- 🚶 15 mins.
- 🌸 1-stars
- 🍴 French



Maison Dunand

- 🕒 Thursday - Tuesday
17:30 - 21:00 hrs.
- 🚇 BTS - Chong Nonsi (Exit 3)
- 🚗 25-30 mins.
- 🌸 1-stars
- 🍴 French Contemporary



Sushi Masato

- 🕒 Tuesday - Sunday
12:00 - 14:00 hrs. /
17:00 - 22:00 hrs.
- 🚇 BTS - Phrom Phong (Exit 6)
- 🚗 30 mins.
- 🌸 1-stars
- 🍴 Japanese



Nawa

- 🕒 Wednesday - Monday
18:00 - 22:30 hrs.
- 🚇 BTS - Ekkamai (Exit 1)
- 🚗 35 mins.
- 🌸 1-stars
- 🍴 Thai



Phad Thai Fai Ta Lu (Dinsor Road)

- 🕒 10:00 - 24:00 hrs
- 🚇 MRT - Sam Yot
- 🚗 30 mins.
- 🌸 Bib Gourmand
- 🍴 Street Food



K. Panich

- 🕒 07:00 - 18:00 hrs.
- 🚇 MRT - Sam Yot
- 🚗 30 mins.
- 🌸 Bib Gourmand
- 🍴 Street Food



Ann Tha Din Daeng

- 🕒 Wednesday - Sunday
11:00 - 20:00 hrs.
- 🚇 BTS - Khlong San
- 🚗 35 mins.
- 🌸 Bib Gourmand
- 🍴 Seafood



Jeh O

- 🕒 16:30 - 24:00 hrs.
- 🚇 MRT - Hua Lamphong
- 🚗 20 mins.
- 🌸 Bib Gourmand
- 🍴 Street Food



Laem Charoen Seafood - Central World - Siam Paragon

- 🕒 11:00 - 21:00 hrs.
- 🚇 BTS - Chit Lom (Exit 6)
BTS - Siam (Exit 5, 6)
- 🚗 20-30 mins.
- 🍴 Seafood



Somboon Seafood - Siam Square One - Central World - Central Embassy - Bantadthong

- 🕒 11:00 - 21:00 hrs. |
11:00 - 22:00 hrs.
for Bantadthong branch
- 🚇 BTS - Siam (Exit 4)
BTS - Chit Lom (Exit 6)
BTS - Ploenchit (Exit 5)
BTS - National Stadium
(Exit 2)
- 🚗 20-30 mins.
- 🍴 Seafood



Valse.studio - dine & wine

- 🕒 Tuesday - Sunday
18:00 - 22:00 hrs.
- 🚇 BTS - Victory
- 🚶 5 mins.

Shopping Malls



Siam Paragon

🕒 10:00 - 22:00 hrs.
 🚆 BTS - Siam (Exit 5)
 🚗 10 mins.



Siam Center

🕒 10:00 - 22:00 hrs.
 🚆 BTS - Siam (Exit 1)
 🚗 10 mins.



Siam Discovery

🕒 10:00 - 22:00 hrs.
 🚆 BTS - Siam (Exit 1)
 🚗 10 mins.



Siam Square One

🕒 10:00 - 22:00 hrs.
 🚆 BTS - Siam (Exit 4)
 🚗 10 mins.



MBK Center

🕒 10:00 - 22:00 hrs.
 🚆 BTS - National Stadium (Exit 4)
 🚗 10 mins.



Central World

🕒 10:00 - 22:00 hrs.
 🚆 BTS - Siam (Exit 6)
 BTS - Chit Lom (Exit 6)
 🚗 15 mins.



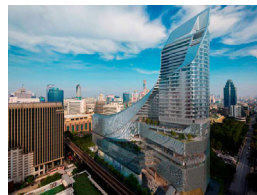
Gaysorn Village

🕒 10:00 - 20:00 hrs.
 🚆 BTS - Chit Lom (Exit 6)
 🚗 15 mins.



Central Chidlom

🕒 10:00 - 22:00 hrs.
 🚆 BTS - Chit Lom (Exit 5)
 🚗 15 mins.



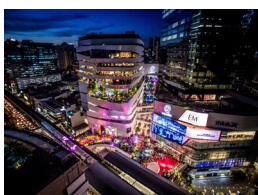
Central Embassy

🕒 10:00 - 22:00 hrs.
 🚆 BTS - Phloen Chit (Exit 5)
 🚗 15 mins.



Emporium

🕒 10:00 - 22:00 hrs.
 🚆 BTS - Phrom Phong (Exit 2)
 🚗 30 mins.



EmQuartier

🕒 10:00 - 22:00 hrs.
 🚆 BTS - Phrom Phong (Exit 1)
 🚗 30 mins.



EmSphere

🕒 10:00 - 22:00 hrs.
 🚆 BTS - Phrom Phong (Exit 3)
 🚗 30 mins.



Icon Siam

🕒 10:00 - 22:00 hrs.
 🚆 BTS - Charoen Nakhon (Exit 3)
 🚗 45 mins.